

A wide-angle photograph of an Arctic landscape. In the foreground, dark, choppy water is filled with numerous icebergs of various sizes. To the right, a large, white, snow-covered landmass or ice shelf extends into the water. In the background, a range of jagged, snow-capped mountains rises under a pale, overcast sky. An orange rectangular box is overlaid on the left side of the image, containing the text 'K&L GATES' in white.

K&L GATES

# Arctic Development Event

Washington, D.C.

October 6, 2015

## Agenda

- Welcome & Keynote Speaker Introduction
  - Keynote Address
  - Overview of Territorial Issues
  - Panel Discussion
  - Q&A
-

# Keynote Address



Senator  
Daniel Sullivan  
(R-Alaska)

The background of the slide features a blue bokeh effect with out-of-focus light spots. A solid orange horizontal band is positioned in the center, containing the title text in white.

# Presentation: Overview of Territorial Issues

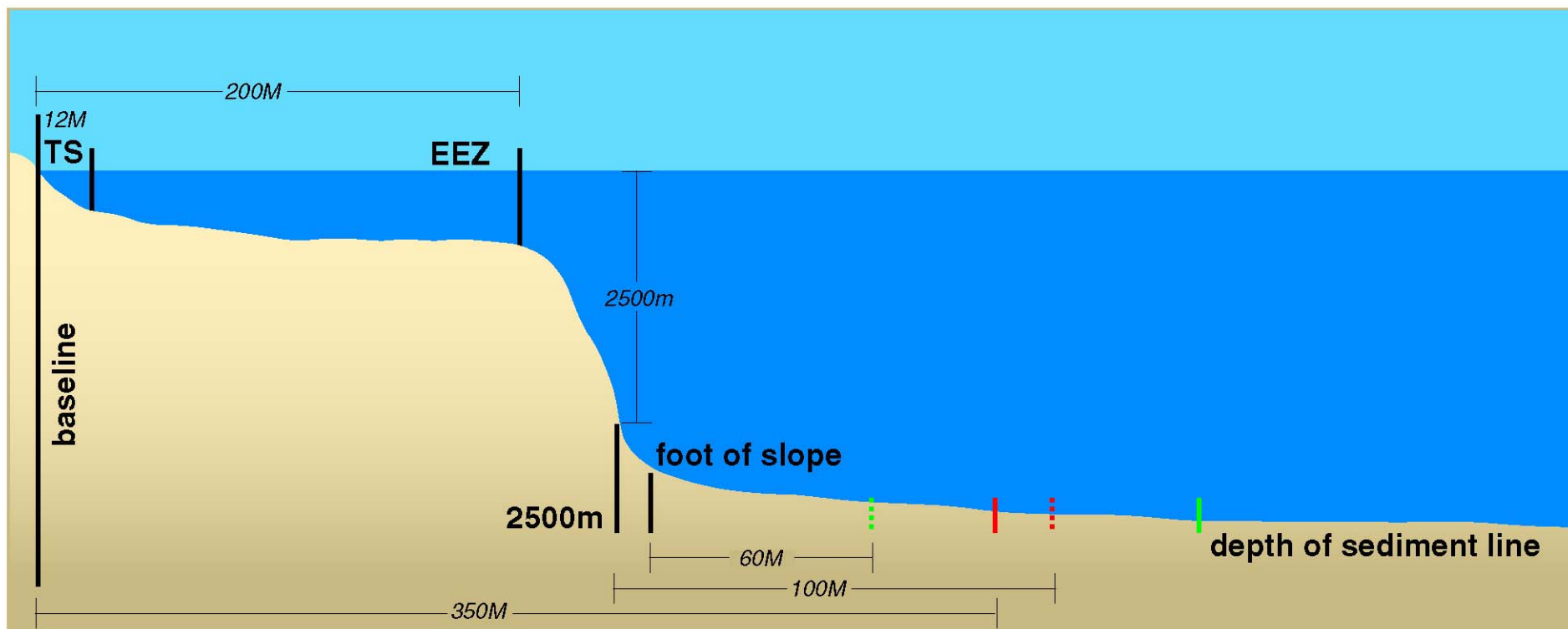
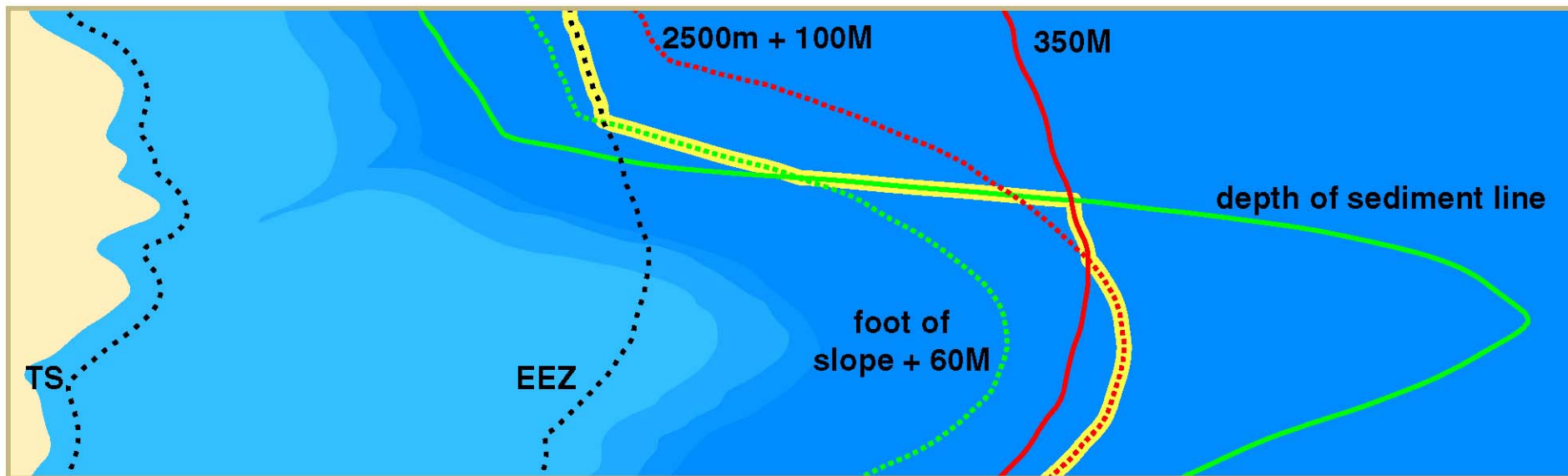
## Coalter Lathrop, Sovereign Geographic

## Coalter Lathrop

Principal  
**Sovereign Geographic**

Overview of Territorial Issues  
in Arctic





# Arctic jurisdictional zones, boundaries, and limits (as of August 2015)



Source: IBRU, Durham University

# Arctic high seas (*i.e.*, water column beyond 200M)



Source: IBRU, Durham University

# Delimited maritime boundaries



Source: IBRU, Durham University

# Undelimited boundaries within 200M



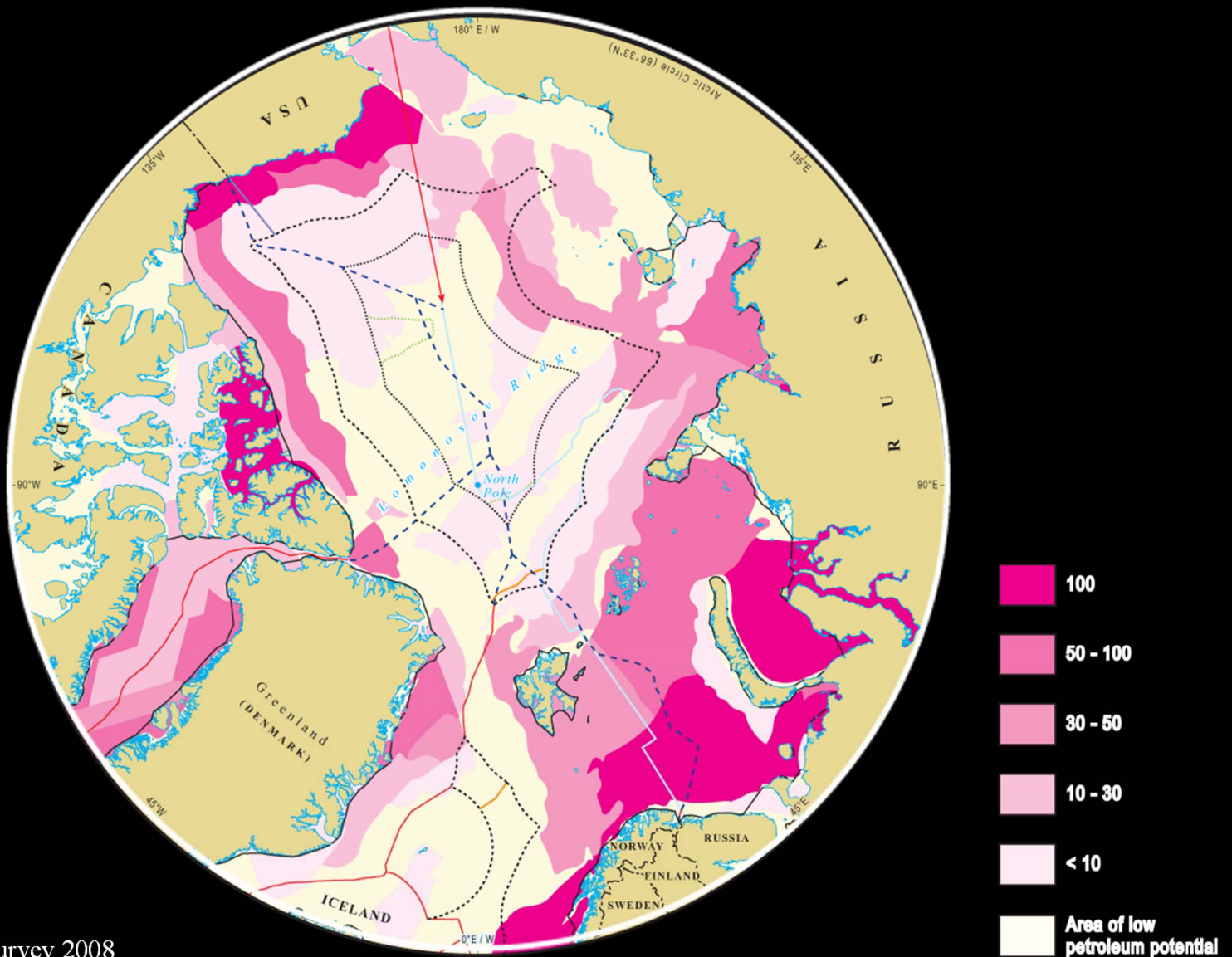
Source: IBRU, Durham University

# Overlapping continental shelf claims



Source: IBRU, Durham University

# Percentage chance of at least one undiscovered oil and/or gas field with recoverable resources >50 million BOE (by assessment unit)



Source: US Geological Survey 2008

# Northwest Passage and the Northern Sea Route



Source: IBRU, Durham University

# Thank you

Coalter G. Lathrop

+1 202 905 5820

[coalter@sovereigngeographic.com](mailto:coalter@sovereigngeographic.com)

Sovereign Geographic



INTERNATIONAL BOUNDARY CONSULTANCY

[www.sovereigngeographic.com](http://www.sovereigngeographic.com)

The background of the slide is a deep blue with a bokeh effect, featuring numerous out-of-focus light spots in shades of blue and white. A solid orange horizontal band is positioned in the center of the slide, containing the title text.

# Panel Presentations and Discussion

**Representative Bob Herron, Chair  
Economic Development, Tourism and Arctic Policy  
Committee**

**State of Alaska Arctic Policy Priorities**

- **Investment in Arctic infrastructure Very Important**
- **Sharing Offshore Petroleum Revenues with the State, Tribes and Communities**
- **32 Strategic Recommendations in the Alaska Arctic Policy Commission Implementation Plan ([akarctic.com](http://akarctic.com))**



Loading zinc ore to a bulk carrier off Kivilina, Alaska near the Red Dog Mine.

## Richard Ranger

Senior Policy Advisor  
**American Petroleum Institute**



### Top 3 Arctic Issues

- A long history of successful operations in Arctic conditions, characterized by continuing advances, shows that most of the U.S. Arctic Offshore conventional oil and gas potential can be developed using existing field-proven technology.
- The economic viability of U.S. Arctic development is challenged by operating conditions and the need for updated regulations that reflect Arctic conditions. Technical feasibility is not the only consideration. Stakeholder alignment and regulatory efficiency influence economic viability, and resource opportunities of sufficient size and quality must be found to set the foundation for Arctic development.
- Realizing the promise of Arctic oil and gas requires securing public confidence, at one level from residents of the Arctic's communities and villages, from citizens of Arctic jurisdictions, and, in an interconnected world, increasingly from a Global audience.

## Francisco Sanchez

Sr. Managing Director  
**PT Capital**

### Top 3 Arctic Issues

- Arctic as an emerging market
- In a cyclical downturn, continued spend in Alaska
- The low marginal cost per barrel of oil in Alaska



## Darrell L. Conner

Government Affairs Counselor  
**K&L Gates**



### Top 3 Arctic Issues

- Long-term potential growth opportunities for the maritime sector due to the melting Arctic ice
- Factors driving these opportunities (e.g. natural resources, new shipping routes, tourism, etc.) which are dependent on other factors (e.g. infrastructure development, international cooperation, weather, etc.)
- Opportunities are emerging despite challenges: 1) Icebreaker, 2) Deepwater port, 3) International Shipping and 4) Natural Resources

**QUESTIONS?**

## Stay Informed

Visit the K&L Gates' Arctic Practice Page:

[www.klgates.com/arctic-practices](http://www.klgates.com/arctic-practices)

Darrell Conner – [darrell.conner@klgates.com](mailto:darrell.conner@klgates.com)

Louann Cutler – [louisana.cutler@klgates.com](mailto:louisana.cutler@klgates.com)

David Wochner – [david.wochner@klgates.com](mailto:david.wochner@klgates.com)